

CONTRIBUTION OF DEI TO UN SUSTAINABLE DEVELOPMENT GOALS



Dayalbagh Educational Institute
(Deemed to be University)
Dayalbagh, Agra

Dayalbagh and the Concept of Better Worldliness

“Dayalbagh, at a distance from the City of Agra, is quiet and peaceful like a village and yet there is a perfect arrangement of sanitation and cleanliness as in cities. Students, scientists and devotees keep themselves peacefully engaged in their respective activities away from the turmoil of the world, and the unemployed, agriculturists and labourers get opportunities to earn their livelihood. Neither does wealth flow here, nor does anybody starve here; neither are there any big palaces and mansions here, nor are there any dilapidated huts either; neither is anyone great or big here, nor anyone small and insignificant, and if anybody here is more honored than others, it is he who works better or more than others. Dayalbagh belongs to every resident, while no resident has any kind of right to property in anything here. In this small place, Dayalbagh, where there is almost no illiterate person and where nobody leads a life of laziness and indolence, which is neither a village nor a town.”

-Param Guru Huzur Mehtaji Maharaj (1956)

DEI Philosophy

Philosophy

DEI (Deemed to be University) follows a “lifestyle based on the trinity of:

1. **Better Worldliness** (Selfless-Service to Neighbouring Community)
2. **Fatherhood of God and Brotherhood of Man, and**
3. **Sigma Six Q,V,A,I** where V, Q and I refer respectively to ISM* (Consensus-Building via evolutionary Approach)-Valuation (e.g. AHP); Qualities (e.g. TQM); and Innovations; in Agriculture & Dairy, Renewable Energy (preferably), Women Empowerment via Evolutionary Education/Learning \rightleftharpoons Living (e.g. Preaching \rightleftharpoons Practicing Ultra-Transcendental-Meditation Practices {as Lacto- Vegetarians rather than Vegans (with Debatable Social Norms)} i.e. Static (Spiritual Potential Differences) to Ever-Growing Dynamic Equilibrium Interpretive Structural Modelling”

- [XXXX Convocation, Director’s Report, DEI, 2022, p1]

Dayalbagh and DEI symbolize community networks that focus on the overall well-being of people and the planet. They work in harmony to establish the vision of attaining an Eco-village status for the community, through the establishment of a Healthcare habitat with a focus on Sigma Six V-Q-I.

Ambrosial Words

- “In the opinion of some people, we should have more money to spend to live good life. But in our lifestyle of Better Worldliness, we require to awaken our inner spiritual consciousness where there is the kingdom of our Inner True Self, rather than the rule of and authority of mind, intelligence and matter alone. This is the Dayalbagh way of life – Sigma Six Q. Sigma means that all these aspects or components have interaction amongst themselves, and the cumulative effect of all these many times more than their individual effect”.

-Prof. P.S. Satsangi Sahab (2014)

DEI Education Policy- 1975

- ☐ Physical, intellectual, emotional & ethical integration

- ☐ Spirit of truthfulness, temperance, courage

- ☐ Humility, simple living, selfless service & sacrifice

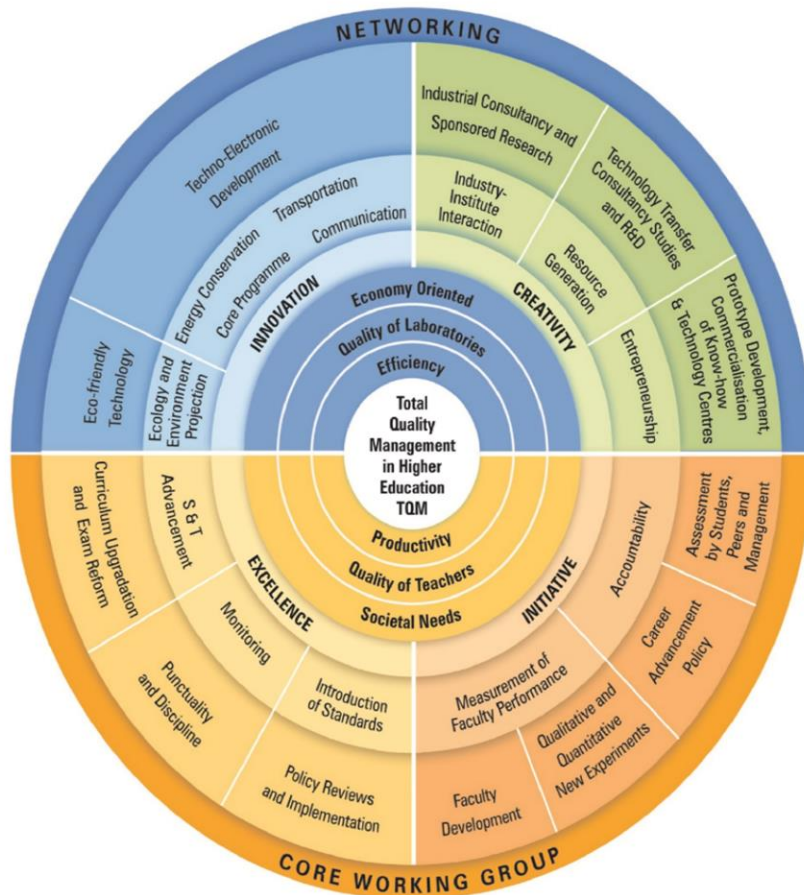
- ☐ Scientific temper, training in practical science and technology

- ☐ Willingness & capacity to work with one's hands

- ☐ Respect for all beliefs and faiths

- ☐ Creation of a spirit of “brotherhood of man” /Gender-free Cooperation

Conceptual Model of Total Quality Management (TQM) Framework of D.E.I.

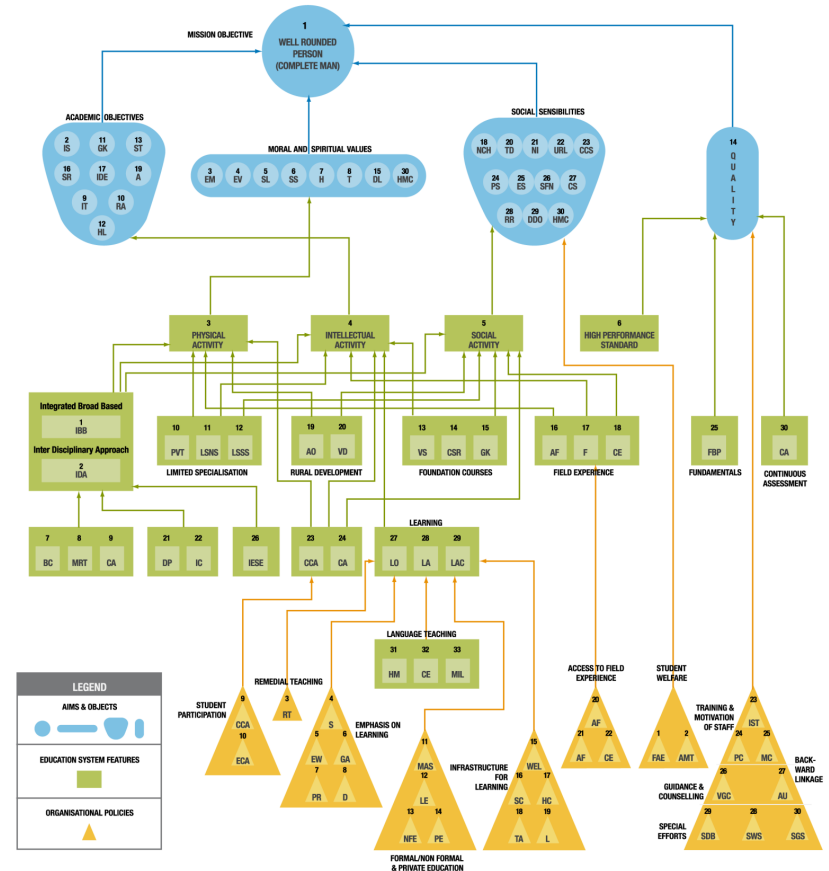


DEI's TQM approach in education involves:

- Achieving high quality
- Understanding how different segments of the educational process influence each other
- The ISM (overleaf) provides a systematic and comprehensive view of how the Aims & Objectives, Educational system and Organization of DEI are integrated in the Education Policy

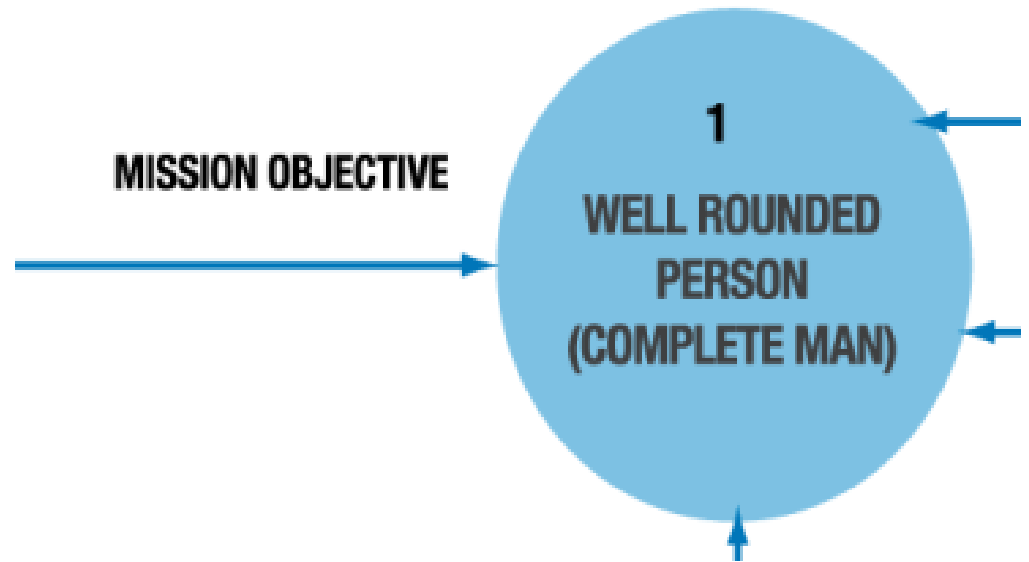
Interpretive Structural Model

Revered Prof. Prem Saran Satsangi Sahab created a detailed **Interpretive Structural Model** for the Educational System at DEI that shows how the **Aims and Objectives** are achieved through unique **Educational System Features** supported by its **Organisational Policies**.

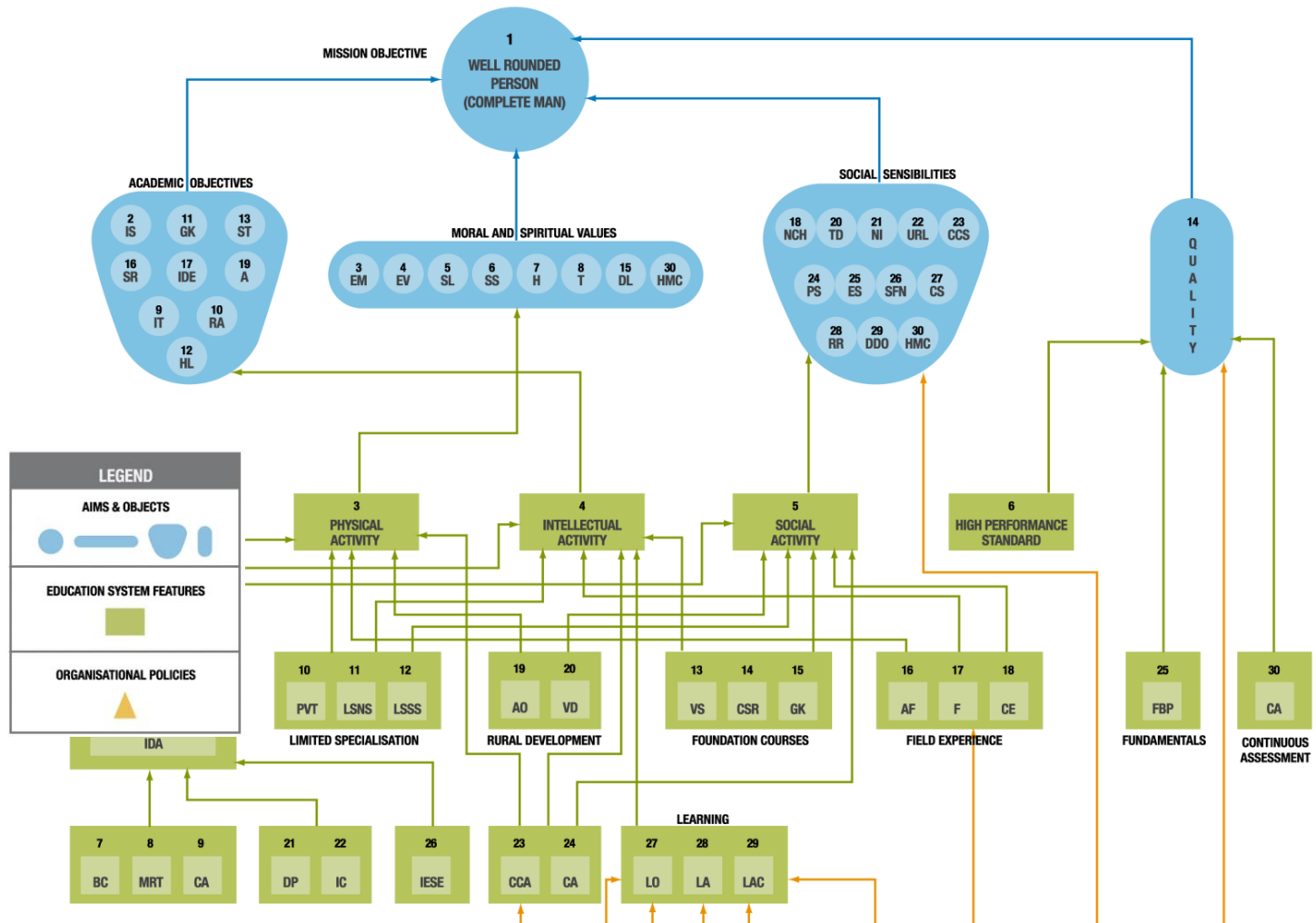


Mission Objective

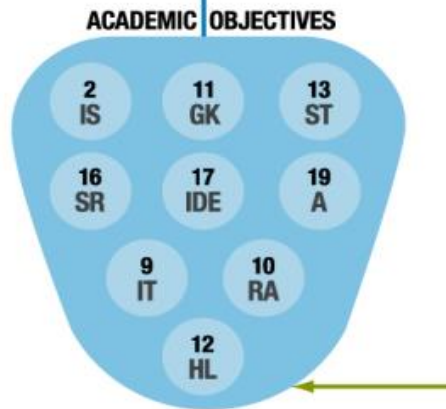
"The DEI Education Policy is an innovative, comprehensive, and flexible higher and technical education policy with the mission objective of evolving a complete man (total quality person) which conforms to the concept of total quality management and is geared for the transformation of India to a knowledge society".



Aims and Objectives



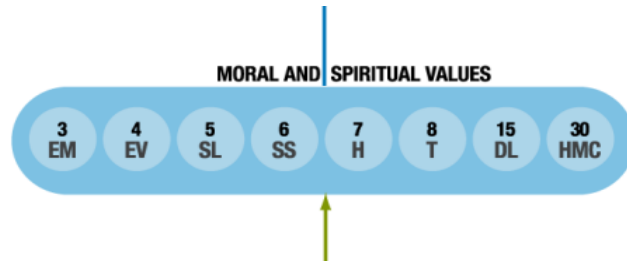
Academic Objectives



Academic objectives include:

- 2. intellectual strength,
- 11. general knowledge,
- 13. a scientific temper,
- 16. a spirit of self-reliance,
- 17. an interdisciplinary outlook,
- 19. aptitude
- 9. independent thinking,
- 10. reasoning ability, and
- 12. a habit of life-long learning.

Moral and Spiritual Values



Moral and Spiritual Values include

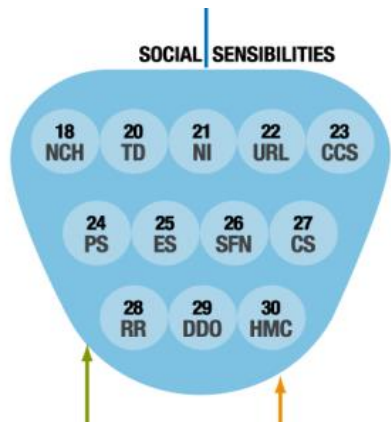
- 3. emotional maturity,
- 4. ethical values,
- 5. simple-living,
- 6. selfless-service,
- 7. humility,
- 8. truthfulness,
- 15. dignity of labour, and
- 30. high moral character.

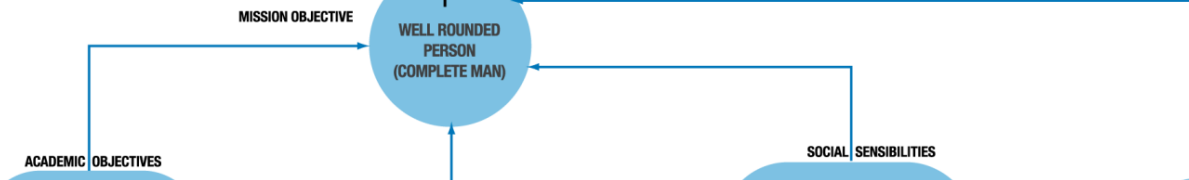
Social Sensibilities



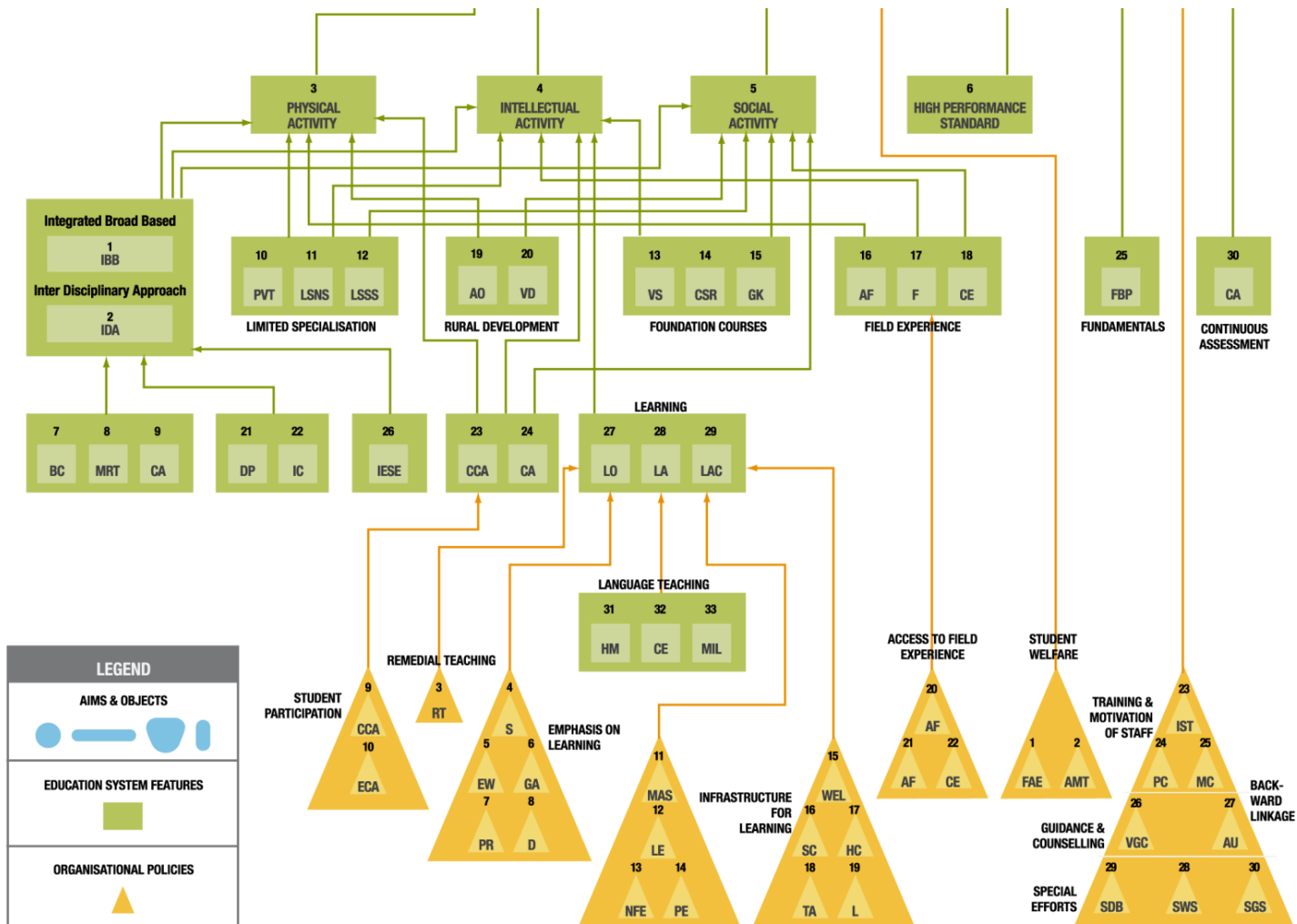
Social sensibilities include

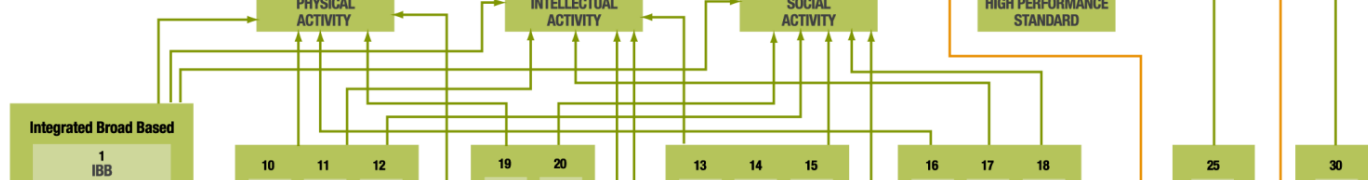
- 18. an appreciation for our national culture and heritage,
- 20. tolerance for diversity,
- 21. national integration,
- 22. understanding of rural life,
- 23. classless and casteless society,
- 24. political system
- 25. Economic system
- 26. Social forces and needs
- 27. civic sense,
- 28. a respect for the rights of others, and
- 29. sense of duty and the need to discharge obligations.
- 30. high moral character.



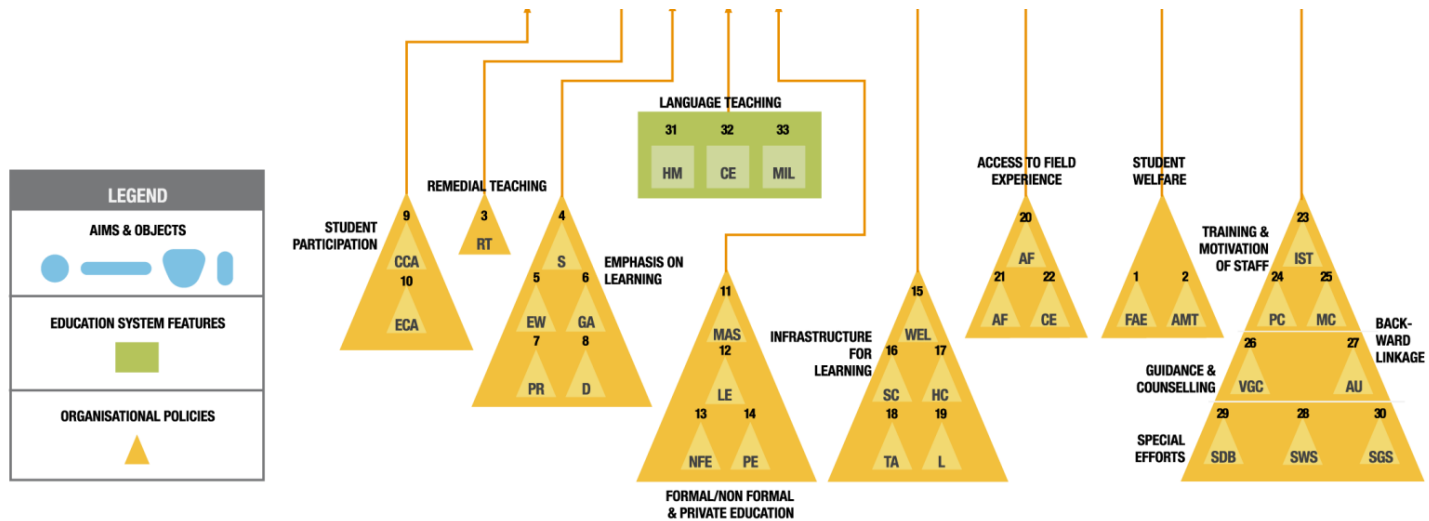


Education System Features

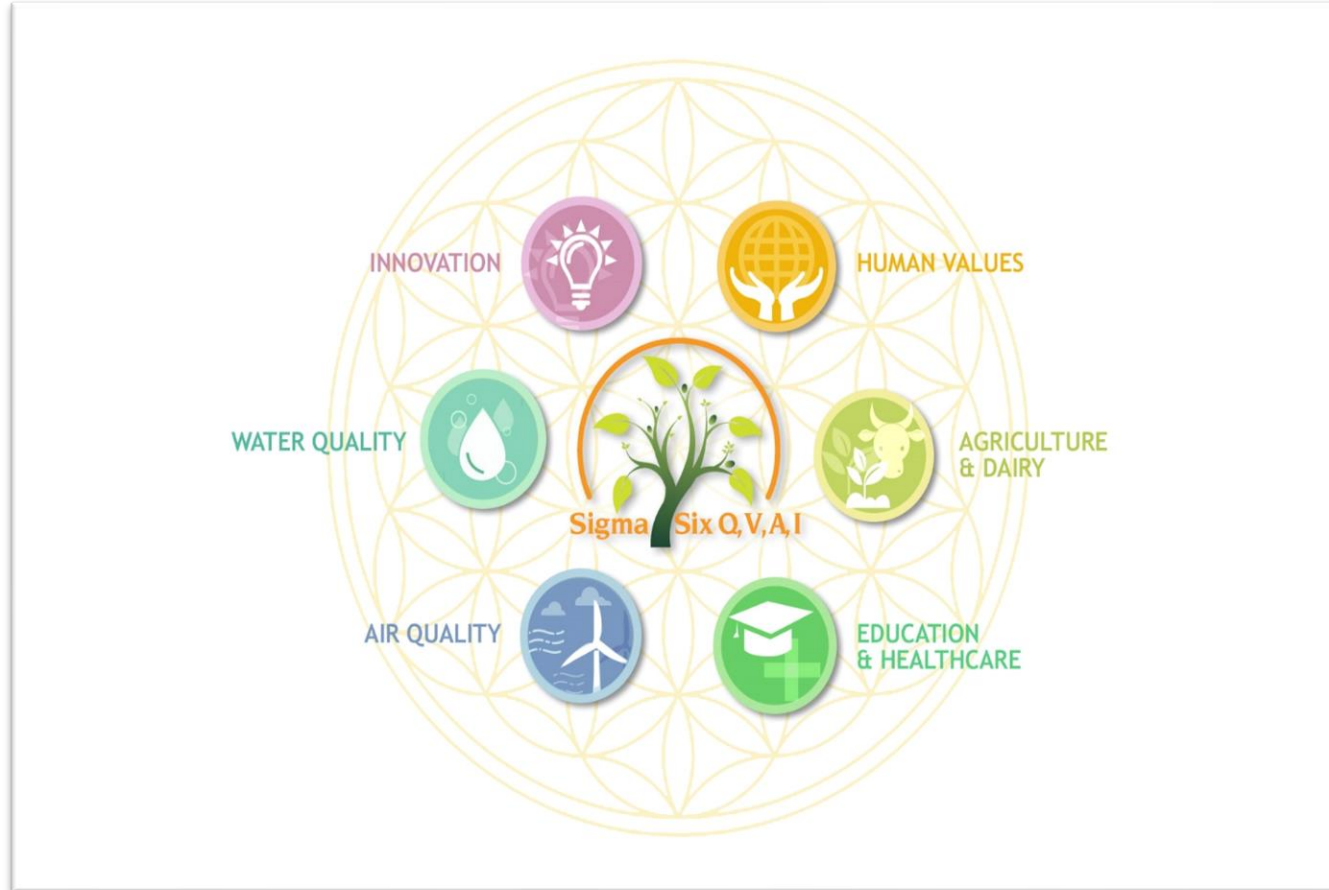




Organizational Policies



Synergy between DEI and the Dayalbagh way of life



In alignment with the Sustainable Development Goals, DEI practices a **Systems Approach to Sustainability** referred to as the **Sigma Six Q,V,A,I** Approach which weaves together **six basic threads**, and emphasizes the importance of **research** in improving the QUALITY (Q) of life.

Realizing the SDGs for All: Ensuring Inclusiveness and Equality for Every Person, Everywhere

Leaving no one behind lies in the heart of 2030 Agenda for Sustainable Development. Ensuring inclusion and equality for every individual, as well as recognizing that the dignity of the person is fundamental, and by pledging that all goals and objectives are achieved for all nations, peoples and societies.

UN Sustainable Development Goals address the global challenges we face, including those related to poverty, inequality, climate, environmental degradation, prosperity, peace and justice.

Implementing Inclusivity -The 17 SDGs are grouped into 5 themes: People, Planet, Prosperity, Peace, Partnerships



Complete Person

CONCEPTS

Fatherhood of god and brotherhood of man

- Inclusivity, Resilience
- Equality and Equity
- Sustainability, Sharing, Sacrifice, and Service

Better worldliness

- Balanced lifestyle(Physical, Mental and Spiritual Development)
- Minimalism
- Moral, Ethical, Civic, Social Values

Sigma Six Q, V, A , I (Qualities, Values, Attributes, and Innovations)

- Women Empowerment (all opportunities and Choices including self defence)
- Quality Values- based Education
- Renewable Energy and Innovations
- Air and Water quality (WHO norms)
- Health and Human Values
- Agroecology and Precision Farming

Reaching the last, the least, the lowest, and the lost

1 NO POVERTY



Food and nutrition: Medical camp



Women Self Help Group



Medical and Rural Assistant camp



Market outlet
at DEI campus



Daily Milk Testing

Pasteurizer

Paneer Frame

Cream Separation



Micro-Bakery

Chilly Pickle Making

Mango Pickle Making



DEI QUANTAM JUGGAD OUTLETS

2 ZERO HUNGER



Student Participation in Agriculture Work



Vegetable Produce in DEI



Food and nutrition: Medical camp



Dairy and Agriculture

2 ZERO HUNGER



- **DEI Dairy and Agriculture**
- **Agroecology Initiatives –Anupam Upvan /Biodiversity parks /Agricultural land**
- **Free Nutrition Supplement to –**
 - i) **3 weeks to 8 years**
 - ii) **Nursery and Primary Schools**
 - iii) **Neighbouring Village children from 6 months to 15 years (Medical Camp)**
- **DEI Quantum Jugaad: Innovative, Flexible, Economical Solutions**
- **Vegetables sale counters**
- **Solar agriculture farming and greenhouse**
- **Department of Food and Home Science**



Precision agriculture, modern farming practices, Lacto vegetarian Diet to help fulfil need to feed 11 billion people by 2030



3 GOOD HEALTH AND WELL-BEING



3 GOOD HEALTH AND WELL-BEING



- Sustainable Healthcare Habitat
- Integrated Health Care System AYUSH
- DEI Medical and Rural Assistant Camp
- Free 24/7 Ambulance Service
- Lacto -Vegetarians campus
- Tree Plantation Biodiversity Parks
- Center for Yoga and Meditation
- Free Nutrition Supplement
- Sports indoor and out door games
- PT and Self Defence Training
- Core courses
- Social Service
- Continuous monitoring of children's health (Regular Health Check Ups)
- Restricted movement of private vehicles
- Regular monitoring of air and water quality (according to world standard)
- Biodiversity Parks & Green House -
- Eco-Friendly Bamboo structures- classrooms and crèche
- Misting

Air Quality



E - Vehicles



Electric Cart



**Solar Hybrid
Vehicle**



**Agriculture Solar Farm
DEI, IIT Roorkee,
University of Tromso,
Norway**



**Misting and Fountains used
to settle air pollutants and
enhance cooling**

4 QUALITY EDUCATION



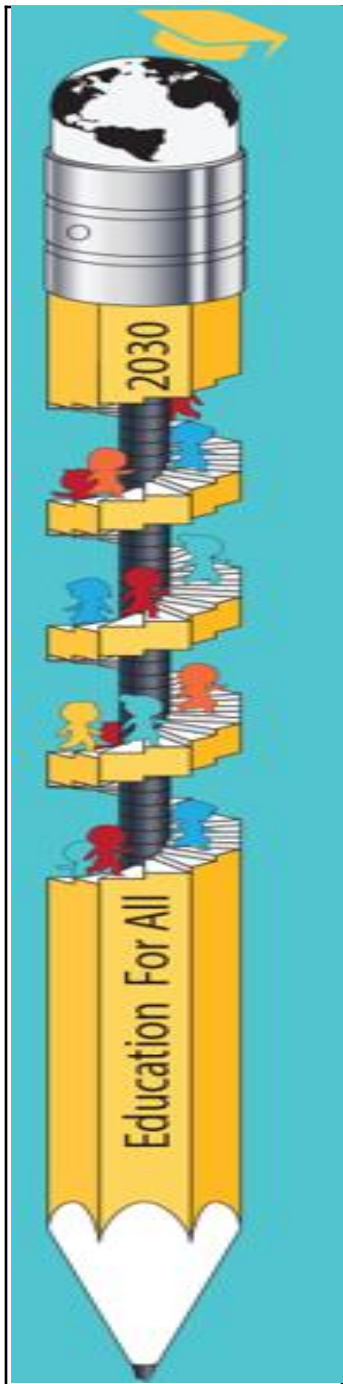
EQUAL ACCESS TO QUALITY EDUCATION

- Unique 1975 DEI Education Policy
- TQM and ISM Advisory Committee on Education
- Group Discussions and Seminars
- Work Experience Courses
- Continuous Evaluation with Daily Home Assignments
- Core courses and Value Education
- Multiple Entry and Exit
- Double durations (7 years program to 4 years program)
- Horizontal Transitions
- Lateral Entry

EQUAL ACCESS TO AFFORDABLE TECHNICAL AND VOCATIONAL EDUCATION

- Education to the last, the least, the lowest, and the lost
- Earn while you learn and learn while you earn scheme
- DEI Frugal and Quantum *Jugaad* innovation
- Moocs KANE-BHARAT
- Connecting REZ to SEZ to international markets
- e-DEI-World Wide Web (Not for profit)
- 478±1 Information Centers
- Projects and Patents
- PMKVY (Pradhan Mantri Kaushal Vikas Yojna)
- Industry Ready B.Voc and M.Voc Courses





ELIMINATE DISCRIMINATION IN EDUCATION

- ICT-enabled education with 478±1 centres
- Co-operative Education / Field Immersion Program
- 360° transitions
- Non-denominational prayer and uniform
- Environmental Conservation & Biodiversity
- The Triumvirate of Education
- Trans-disciplinary, Multidisciplinary Courses
- Women Empowerment, Reservation for Scheduled classes
- Summer and Winter Camp
- Co-Curricular activities
- Social Relevant Projects

UNIVERSAL LITERACY AND NUMERACY

- Evolutionary superman scheme
- Camps for neighborhood population/Medical Camps
- Partnerships with other Institutions or Societies
- Atal Tinkering Lab (ATL)
- Religion and Science
- Co-op training and Internships
- Trans-disciplinary research
- Career Counselling and Global Alumni Network
- Student Exchange Program (HKU and Edinburgh)
- Village Exposure –Skill India





Experiential element in course: 7 Days Sustainability challenge

2. Segregate Waste

IMPORTANCE OF USING CLOTH BAG:

1. Cloth shopping bags avoid the pollution problems that come with plastic.
2. Most importantly, they can be used over and over. This means we need fewer of them... which means we need fewer resources to make them.
3. You don't have the big storage and disposal problem that you have with plastic bags.
4. Cloth shopping bags tend to be stronger than plastic ones – no more tears or holes for things to fall out! This feature also means that you can carry more in a cloth bag compared with a thin plastic bag of the same size.
5. Cloth bags are quieter than plastic ones – no more crinkly noise!
6. The design options for cloth bags are limitless. This means

Giving away

1. Use Cloth Bags

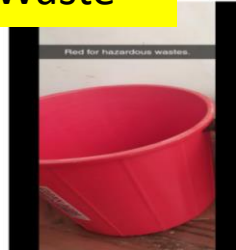
Day 2: 30th Dec

Begin segregating your household waste.



Dry waste includes wood and related products, paper cuttings, cardboards, metals and glass.

Organic waste is any material that is biodegradable and comes from either a plant or an animal. Biodegradable waste is organic material that can be broken into carbon dioxide, methane or simple organic molecules.



Hazardous waste is waste that has substantial or potential threats to public health or the environment.
Characteristic hazardous wastes are materials that are known or tested to exhibit one or more of the following hazardous traits:
• Ignitability
• Reactivity
• Corrosivity
• Toxicity
Listed hazardous wastes are materials specifically listed by regulatory authorities as hazardous wastes which are from non-specific sources, specific sources, or discarded chemical products.

Day 3: 31st Dec 2020

Walk for some distance without using a motorized vehicle



3. Walk/Cycle

A HEALTHY WALK

4. Plant a Tree

Welcome to the New Year!!! Plant a tree



Plantation day

Plantations of trees is important as they improve the life and fulfil essential needs of mankind.
Trees clean the air by absorbing harmful chemicals such as nitrogen oxide and removing dust particles from the air by absorbing them in their leaves. Another importance of planting trees is that they save the water from impurity. The trees cool the environment through their leaves by absorbing the sun heat.

REASONS FOR POOR QUALITY

There are many factors that can lead to poor air quality, but the two most common are related to elevated concentrations of ground-level ozone or particulate matter.

Ground level ozone forms when nitrogen oxides from sources like vehicle exhaust and industrial emissions react with organic compounds in the presence of heat and sunlight. Poor EPA ozone can cause a number of health problems, including coughing, breathing difficulty, and lung damage. Exposure to ozone can make the lungs more susceptible to infection, aggravate lung diseases, increase the frequency of asthma attacks, and increase the risk of early death from heart or lung disease.

6. Check Agricultural prices in local mandi

Day 6: Jan 3rd 2021

Track the prices of agricultural produce in the mandi nearest you by going online.

| AGRI. VTL. USE | WHOLESALE RATE (Rs./kg) | RETAIL RATE (Rs./kg) |
|----------------|-------------------------|----------------------|
| CUCUMBER | 10 | 12 |
| POTATO | 10 | 12 |
| PUMPKIN | 6 | 10 |
| TOMATO | 10 | 12 |
| LADY FINGER | 10 | 12 |
| BRINJAL | 10 | 12 |
| ONION | 10 | 12 |
| CARROT | 10 | 12 |
| BOTTLE GUARD | 10 | 12 |
| CABBAGE | 10 | 12 |
| BADAMSH | 10 | 12 |

Day 7: Jan 4th 2021

Review the waste segregation that you have done, and show all the packaging waste generated in your household during the week. Weigh it. Photograph it. Set it and any electronic waste generated to the Kabadi wala, rather than giving it to the trash collector.



Paper waste



Electronic waste

5. Track Air Quality Index

Visit nearest centre to know the

| DATE | DATE | QUALITY | POLLUTION LEVEL (AQI) |
|----------|---------------|-----------|-----------------------|
| SATURDAY | 30th Dec 2020 | UNHEALTHY | 155 US AQI |

HISTORIC AIR QUALITY GRAPH OF AJMER (HOURLY BASIS)



7. Sell waste segregated to local Kabadi wala

Skill Development Courses at DEI For Sustainable Future



Language Learning-A holistic Approach

- Sanskrit-chitra vithika
- Puppetry, expressive masks, arena stage, commentator-singer or sutradhara, acrobatic feats, symbolic gestures, folk music and dance

(i-c-n-c-) TALL : A Multilingual Digital Lab cum Interdisciplinary Research Centre



- (i-c-n-c-) TALL at DEI is one such unique lab cum research centre which integrates technology, Psychology , Religious Studies, consciousness, language and literature.
- The interactive language learning lessons beautifully present the integration of language, music and visual arts.
- Adopting the Holistic approach of Systems Philosophy, the lab cum research centre includes Indian as well as foreign languages.

5 GENDER EQUALITY



5 GENDER EQUALITY



- Co –Education
- Women Education with more than 67% of women enrolment
- Scientific temperament
- Self-Defence and Health Care Training
- Nano-Enterprises leading to Self-Help groups activities in Jugaad, food processing, dairy, sculpture, and painting, stitching
- Earn while you Learn and Learn while you earn schemes



Women Self Help Groups



Medical and Rural Assistant Camp

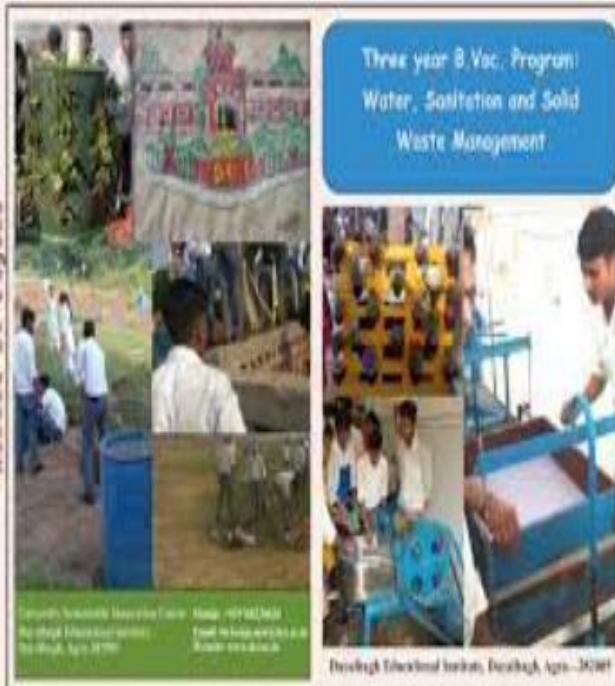
6 CLEAN WATER AND SANITATION



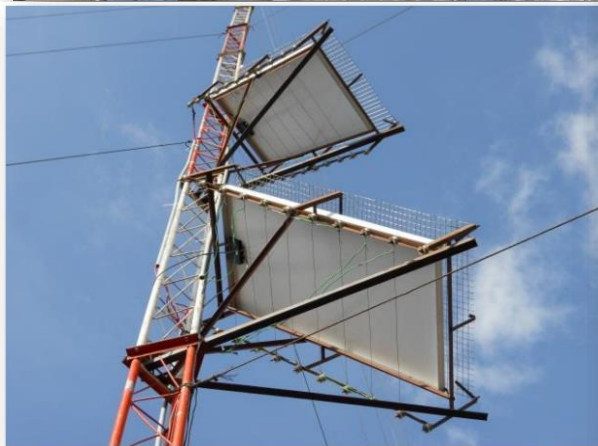
6 CLEAN WATER AND SANITATION



- Recycling biomass into Organic Manure
- Water Purification
- Water Conservation
- Rainwater Harvesting
- Organic Farming
- Waste to Wealth
- Courses on Sanitation and Solid Waste Management
- Biodiversity Parks
- River Water Filtration
- Liquid waste
- E-waste Garden
- 150 CUM Bio-gas plant
- Lacto-Vegetarian rather than Vegan-
- low water foot prints
- Sustainable Healthcare Habitat
- Dip Irrigation



7 AFFORDABLE AND CLEAN ENERGY



Renewable Energy Technologies

The Institute has a 33/11 kV sub-station within its campus for utility supply. It has a 900 kWp Solar power plant to meet its day-to-day energy demand. 13 Distributed Roof-Top Solar PV power Plants aggregating to a total of 879.2 kWp have been installed till 2021.



Fig 9 :Solar power for the radios of Wi-Fi tower with theft prevention measures in the forest region of Rajaborari, Madhya Pradesh



7 AFFORDABLE AND CLEAN ENERGY



- Renewable Energy
- DEI Smart Micro Grid
- Hybrid AC/DC Microgrid with Solar-Agriculture Farm
- Integration of diverse renewable energy sources
- Solar Power
- Electric Vehicle
- 150 CUM Bio-gas plant



REZ- SEZ Household Entrepreneurial model



ATMA or Apparel and Toy Making Association provides women and youth an opportunity to make soft toys. ADyNAM or (Agricultural and Dairy Nano-processing of Multi Products), and AAM or the (Automation and Multi skilling garage) were other innovative experiments in this sphere. The concept of REZ to SEZ was formulated to provide global vantage access to rural entrepreneurial ventures.

9 INDUSTRY, INNOVATION AND INFRASTRUCTURE



POTENTIAL FOR SUSTAINABILITY

Bamboo is one of the most sustainable building materials on the planet and is termed as vegetable steel. It has greater tensile strength (or resistance to being pulled apart) than steel, and it withstands compression better than concrete.

The compressive strength of bamboo is roughly twice to four times the strength of most timber species.

RELEVANCE

Tensile strength. The tensile strength of planted bamboo cables is as strong as steel or stronger than a steel cable of the same size. Hemp rope loses 20% of its strength when wet while bamboo cables increase in strength by as much as 20% when wet.

The design was conceptualized as four pentagons nestled together.

Stage 1: Site cleaning and marking. Trench was dug out and foundation layer was put in. A steel rod was embedded in the column footings.

Stage 2: Bamboo was treated, sanded, measured and cut according to the drawings. The column were then placed on site and joined together with nut and bolts.

PROCESS

Stage 3: The tie beams were attached to the columns using J-hooks. Over the beams the principal rafters were placed. The purlins places over the rafters was covered by the waterproof canvas and finished with a layer of thatch roof.

Stage 4: Woven bamboo mats were installed for the walls which was coated with a layer of earthen plaster to make sustainable wattle and daub earthen walls.

DAYLABH EDUCATIONAL INSTITUTE

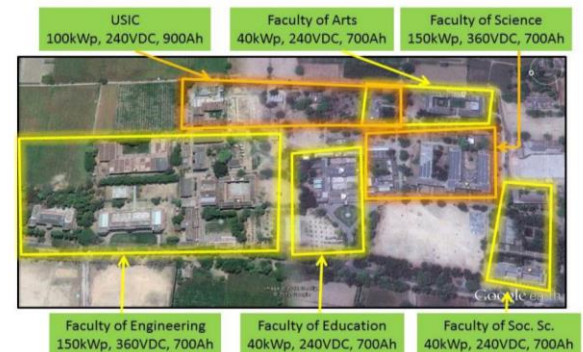


Fig 1 : Satellite view of the institute showing six of the seven existing plants and their coverage

9 INDUSTRY, INNOVATION AND INFRASTRUCTURE



- Innovations in Technology have reduced the digital divide.
- Extensive Virtual Classroom Platforms
- Frugal and Quantum *Jugaad* Innovation
- MoocsKENE-BHARAT
- Synchronous Mode of education
- Partnerships with other Institutions or Societies
- Atal Tinkering Lab (ATL)
- Trans-disciplinary research
- DEI Smart Micro Grid
- Hybrid AC/DC Microgrid with Solar-Agriculture Farm
- Techno Shanti Niketan biodiversity parks
- Biodiversity Parks and Medicinal Garden
- Electric Vehicle
- Bamboo structures
- Ramanuj Machine



DAYALBAGH EDUCATIONAL INSTITUTE



Fig 1 : Satellite view of the institute showing six of the seven existing plants and their coverage

10 REDUCED INEQUALITIES



10 REDUCED INEQUALITIES



- **Affordable & Accessible Education for All**
- **Non-denominational prayer and uniform**
- **Comparative study of Religion and Culture**
- **Self -Défense Training**
- **Trans-disciplinary, Multidisciplinary Courses**
- **Gender and Social Diversity, Women Empowerment**



11 SUSTAINABLE CITIES AND COMMUNITIES



Sigma Six Q,V,A,I



11 SUSTAINABLE CITIES AND COMMUNITIES



- Water Purification and Water Conservation, Rainwater Harvesting
- Waste to Wealth
- Solar Power
- Mist Spray
- Regular Air and water quality checks
- Smart Power Management and Generation
- Paper Recycling Plant
- Responsible disposal of waste
- Composting of dry leaf fall
- Utilization of dairy products into agriculture
- Agriculture provides fodder for dairy animals and humans in a symbiotic relationship
- Sustainable building materials used
- Building design utilizes courtyards which provides natural sunlight reducing requirement of artificial light



12 RESPONSIBLE CONSUMPTION AND PRODUCTION



DEI students work together to support communities and generate food for sustenance



Distribution of free milk to children in agricultural fields

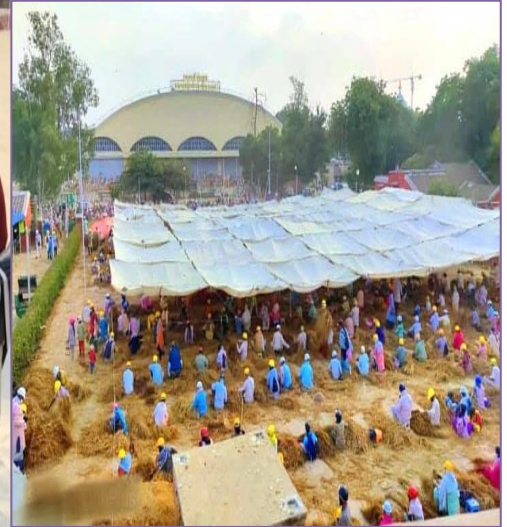


“Dayalbagh has been an agroecological community for over a century now. Agroecology is an umbrella term that emphasizes a community – based approach to issues of sustainability, economic diversification, social values, food and nutrition, and fair trade practices. The Dayalbagh way of living appears to be an example of how these goals can most effectively be met, if the world adopts minimalism alongside these regenerative approaches rooted in Agroecology”

12 RESPONSIBLE CONSUMPTION AND PRODUCTION



- Rural Development and Agriculture Operation
- Circular economy
- DEI Dairy and agriculture
- Frugal and Quantum *Jugaad* Innovation
- Simple living in harmony with Nature and practicing economy in all activities
- Plastic free, drug free, alcohol free campus prescribing Lacto vegetarian food

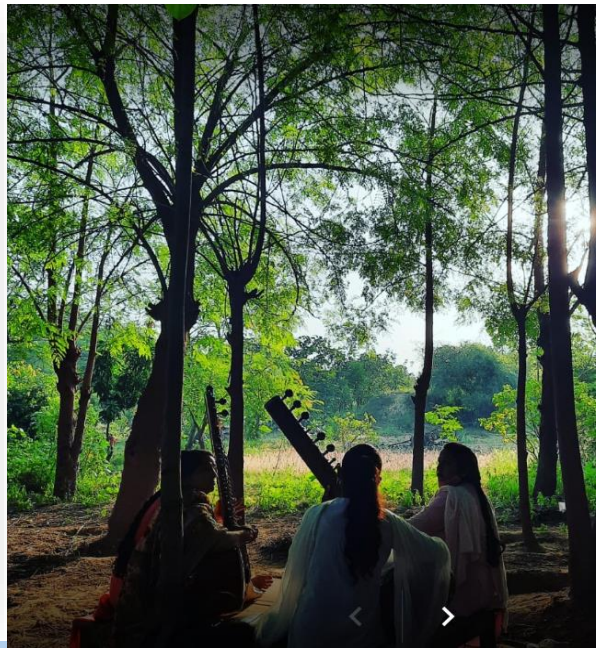




Dairy Technology



13 CLIMATE ACTION



**Agriculture Solar Farm
DEI, IIT Roorkee,
University of Tromso,
Norway**



**Misting and Fountains
used to settle air
pollutants and enhance
cooling**



13 CLIMATE ACTION



- Tree Plantation in collaboration with NGOs SPHEEHA
- Smart Power Management and Generation
- Solar-Agriculture farm in our Dairy Campus
- Integration of diverse renewable energy
- Irrigation with sewage treatment plant water
- Plastic-Free Campus
- Animal Free agriculture
- Waste segregation and responsible disposal
- Climate action is Integrated into courses like MBA – Guest Lectures by Climate Reality Leaders
- Sustainability challenges given to students to experience eco-friendly life style
- No air conditioners on campus unless required by a laboratory
- Cycling/walking in encouraged



14 LIFE BELOW WATER



Water conservation efforts at Dayalbagh and DEI

- Supply of water at fixed times
- Strong advise – not to waste water
- Water conservation message is delivered through NSS social activities
- Plantation of indigenous water efficient trees
- Encouragement of research into new and innovative technologies like river water filtration, rain water harvesting and recycling of sewage water
- Roof top water harvesting and flood water harvesting facilities have been created in the residential and institutional buildings
- Recharging of old dry wells





Water Treatment Plant

Water from the Sewage Treatment Plant (STP) is used to irrigate parks and gardens of DEI such as the Biodiversity Park (Near Seminar Complex), Botanical Garden (Near Science Faculty), Shanti Nagar Park, Herbal Garden (within Dairy Complex), Fruit and Rose Garden (Jatropha land), Phalbagh (at Dayalbagh) and a Biodiversity Park at REI Boys Intermediate College, to name a few.

To recycle wastewater, Jal Nigam, Agra, has set up a Sewage Treatment Plant (STP) on Dayalbagh land with an agreement of providing 6.5 cusecs (15.89 MLD) water to Dayalbagh for irrigation purposes.

- In terms of additional sources of water, the Dayalbagh Educational Institute (D.E.I.) had been sanctioned a project on River Bank Filtration (RBF) by the Department of Science & Technology. The site for RBF is at Chandmari-ka-Tila (near Jatropha field), Dayalbagh close to the river Yamuna. The RBF setup has three large tanks connected one after the other, two control rooms, and solar panel room for the clean and sustainable working of the unit. The riverbank filtrate water is currently being supplied to Bahadurpur village and is expected to be supplied to DEI in the near future.

River Bank Filtration Plant

15 LIFE
ON LAND



16 PEACE, JUSTICE AND STRONG INSTITUTIONS



16 PEACE, JUSTICE AND STRONG INSTITUTIONS



(a) Cultural Activities (b) Social Engagement in the Natural Environment



(c) Selfless Social Service (d) Healthcare and Self-defense Training

- Better Worldliness
- Fatherhood of God and Brotherhood of Man
- Minimalism
- Comparative study of Religion and
- National and DEI days celebrations
- National Social Service Scheme
- Complete Person
- Value Education
- Superman Scheme
- Aristocratic Democracy
- NCC/NSS/Scouting and Guidance
- Non-denominational Prayer and Uniform

17 PARTNERSHIPS FOR THE GOALS



iit delhi

UNIVERSITY OF
WATERLOO



STANFORD
UNIVERSITY



MICHIGAN STATE
UNIVERSITY

Memoranda of Understanding & International Linkages

| | |
|----------------------|------------|
| National | 74 |
| International | 22 |
| Industry partnership | 52 |
| Hospitals | 05 |
| TOTAL | 151 |



 **UNIVERSITY OF
MARYLAND**



PERFECTING SKILL



UNIVERSITY OF
ARKANSAS



17 PARTNERSHIPS FOR THE GOALS



- **Collaborations and MoUs, Joint workshops and Webinars**
- **Dayalbagh Science of Consciousness (DSC)**
- **School of Languages**
- **Partnerships with other Institutions or Societies**
- **Co-op training and internships**
- **Trans-disciplinary research**
- **Career Counselling and Global Alumni Network**
- **Student Exchange Program (HKU and Edinburgh)**
- **Children's Recreation**
- **Connecting REZ to SEZ to international markets**
- **Charitable societies**
- **Day Boarding**
- **Cultural Partnerships**
- **STP Plant :PPP**

SYNERGIES BETWEEN SIGMA SIX QVA AND SDGs



| | | | | | | |
|---------------------------------|---|---------------------------------------|-----------------------------------|---|-------------------------------|-------------------------------|
| Innovation | 9 INDUSTRY, INNOVATION AND INFRASTRUCTURE | 17 PARTNERSHIPS FOR THE GOALS | | | | |
| Water Quality | 6 CLEAN WATER AND SANITATION | 7 AFFORDABLE AND CLEAN ENERGY | 13 CLIMATE ACTION | 14 LIFE BELOW WATER | 15 LIFE ON LAND | 17 PARTNERSHIPS FOR THE GOALS |
| Air Quality | 7 AFFORDABLE AND CLEAN ENERGY | 11 SUSTAINABLE CITIES AND COMMUNITIES | 15 LIFE ON LAND | 13 CLIMATE ACTION | 17 PARTNERSHIPS FOR THE GOALS | |
| Education and Healthcare | 4 QUALITY EDUCATION | 3 GOOD HEALTH AND WELL-BEING | 1 NO POVERTY | 10 REDUCED INEQUALITIES | 17 PARTNERSHIPS FOR THE GOALS | 13 CLIMATE ACTION |
| Agriculture and Dairy | 2 ZERO HUNGER | 5 GENDER EQUALITY | 8 DECENT WORK AND ECONOMIC GROWTH | 12 RESPONSIBLE CONSUMPTION AND PRODUCTION | 15 LIFE ON LAND | 17 PARTNERSHIPS FOR THE GOALS |
| Human Values | 16 PEACE, JUSTICE AND STRONG INSTITUTIONS | 17 PARTNERSHIPS FOR THE GOALS | | | | |

Innovation @DEI



- **DEI Education Policy 1975**
- **Advisory Committee on Education**
- **Flexible Student Centric System**
- **Dynamic Model with an Integrated Systems Approach**
- **Waste Nothing Lifestyle**
- **AIR QUALITY Monitoring & Assessment**
- **Mist spray**
- **Water conservation and Water purification**
- **ICT-enabled education with 479±1 centres**
- **360 degrees transition**
- **Evolutionary superman scheme**
- **MoocsKENE-BHARAT**
- **Earn while you learn schemes**
- **Frugal and Quantum *Jugaad* innovation**
- **Connecting REZ to SEZ to international markets**
- **Student Exchange Program (HKU and Edinburgh)**

Value Education

Uniform

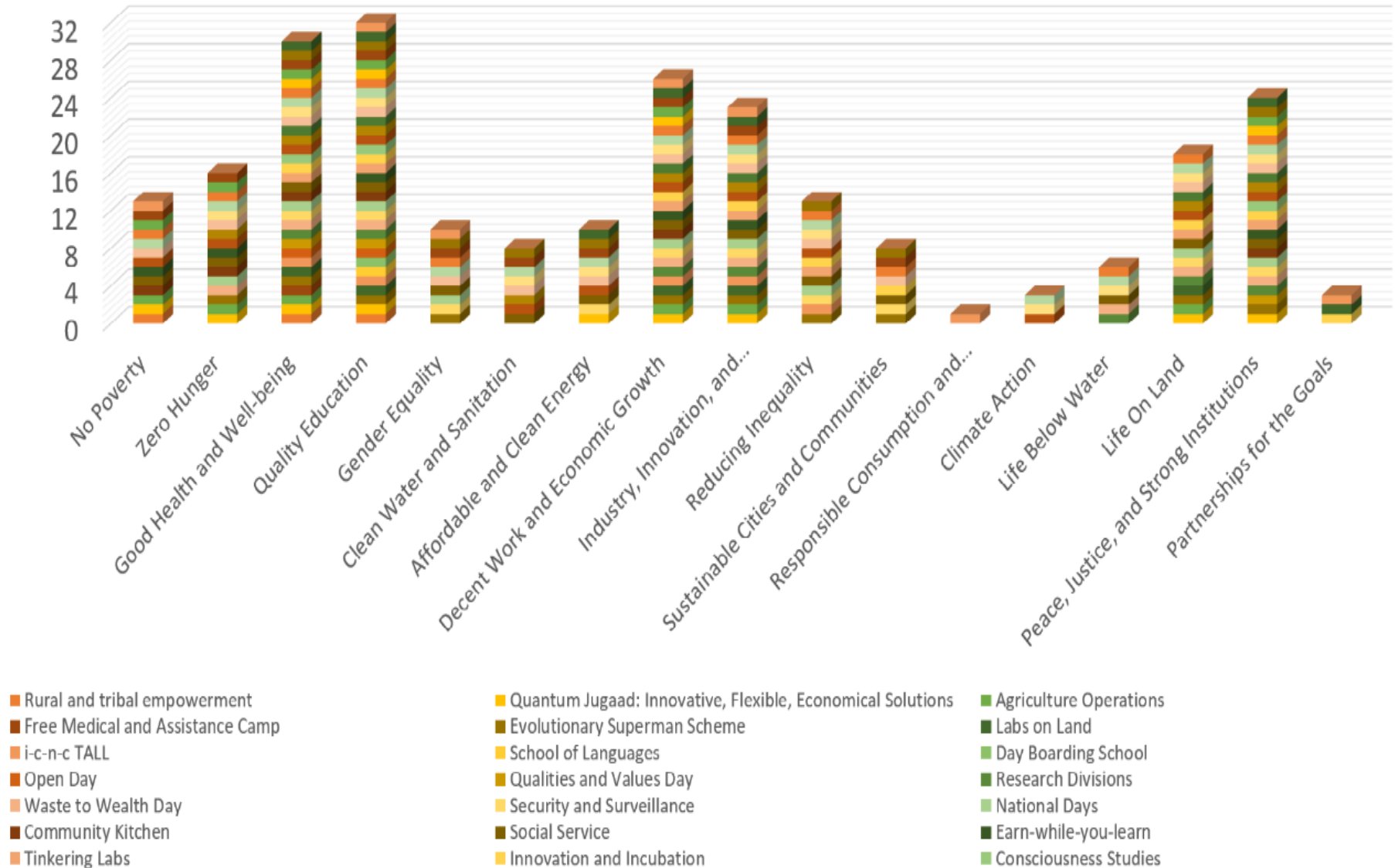
- **Non-Denomination Prayer**
- **Rural and Tribal Empowerment**
- **Agriculture Operations and Dairy**
- **Work Experience and Core Courses**
- **Seminar and Group Discussion**
- **Environment Conscious**
- **Triple Sigma Six QVA Model**
- **The Ramanujan Machine**
- **Dayalbagh Science of Consciousness**
- **Medical Camps**
- **i-c-n-c TALL**
- **Women Empowerment through Integration of Skills with Entrepreneurship**
- **Environmental Conservation & Biodiversity**

Contribution of DEI to UN Sustainable Development Goals

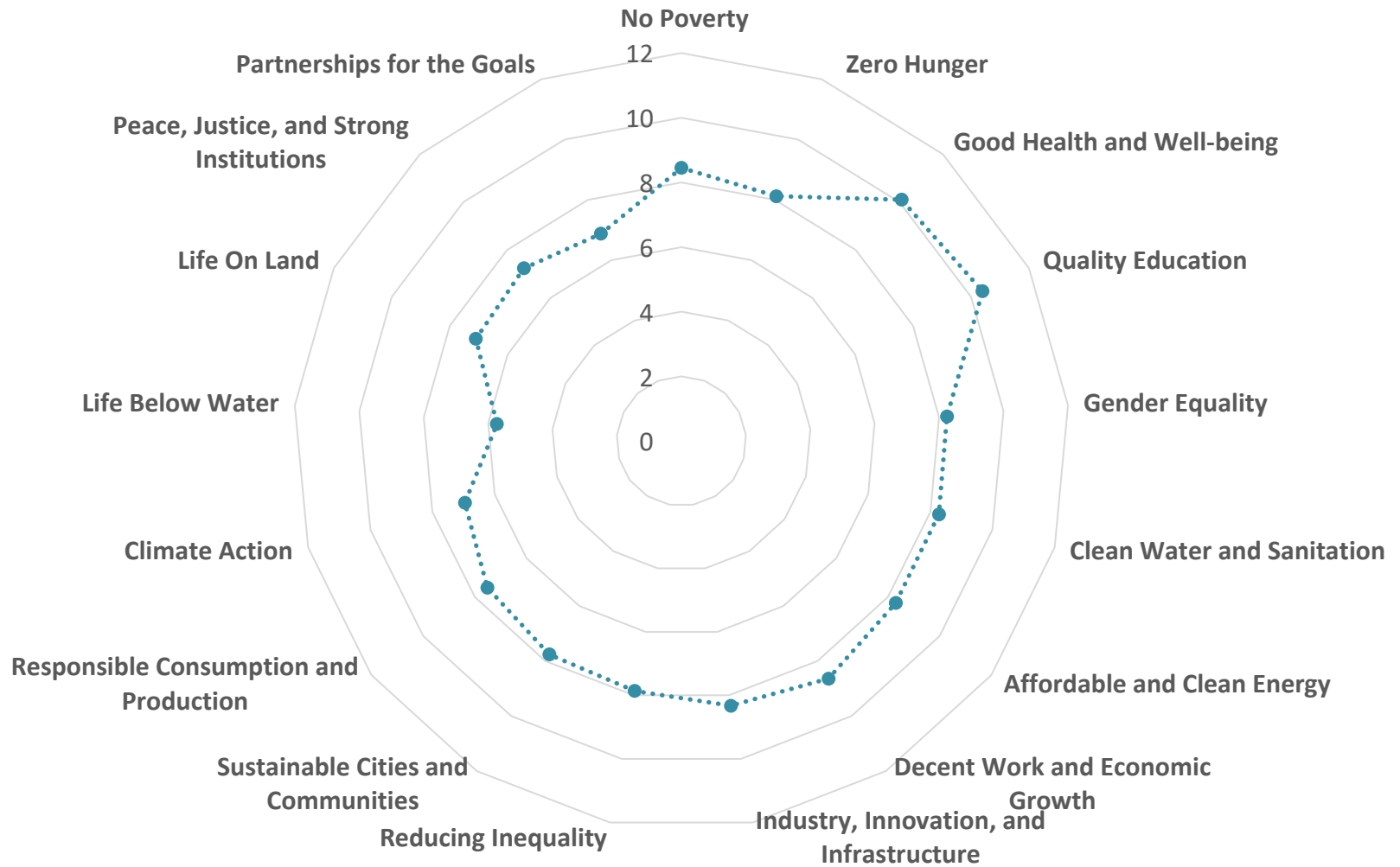
The various activities and programs implemented at Dayalbagh Educational Institute also effectively contribute to the attainment of UN sustainable development goals. Our model of education accommodates all asymmetries and biases. Equity in outcome is achieved in terms of becoming a quality global citizen, ambassador of consensus building.

Believing in frugal living with minimalism, and respecting wellbeing is natural among students. DEI system of holistic education prepares the students for life with a strong belief and adherence to healthy democratic practices, pluralism, inclusivity and service of mankind.

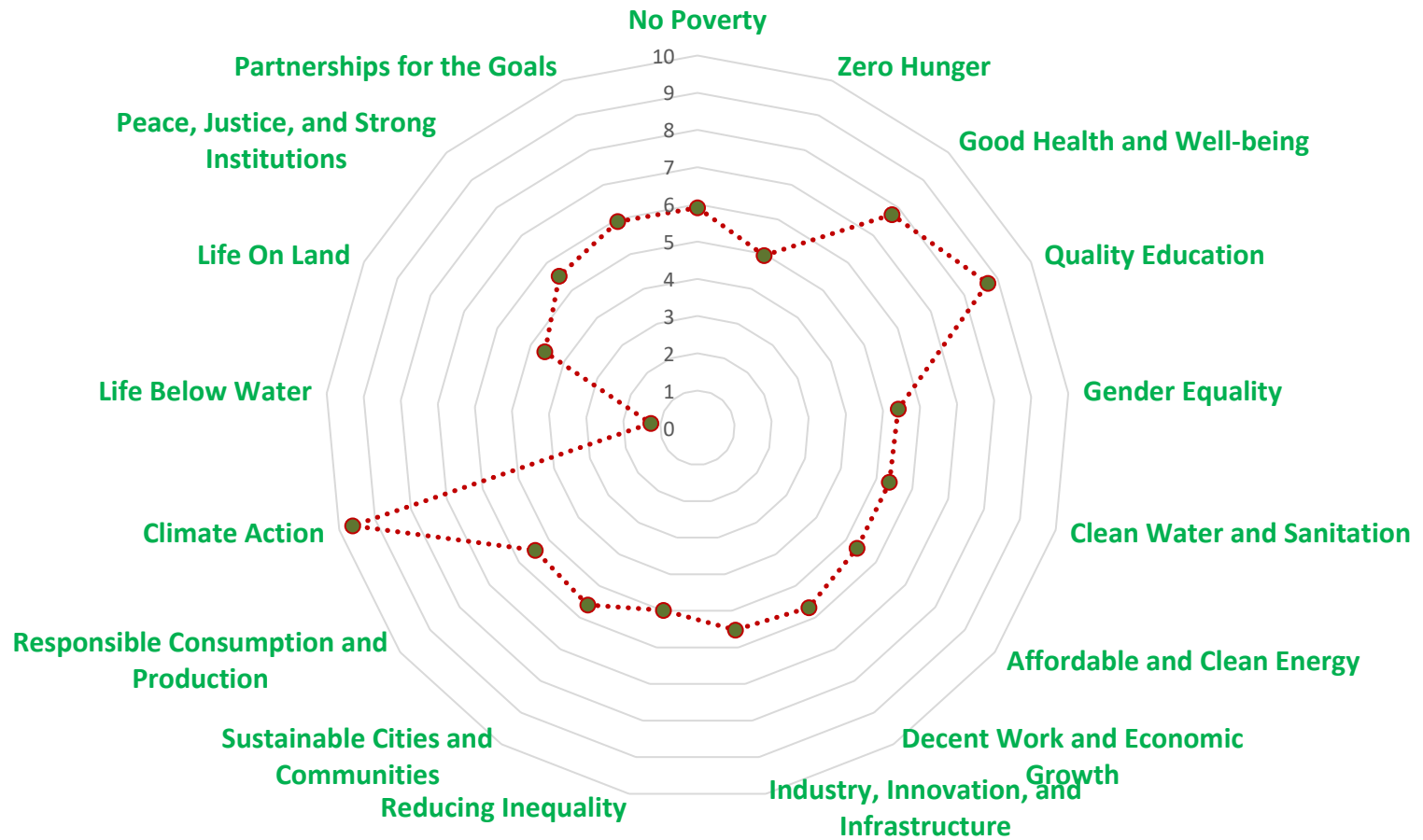
NUMBER OF ACTIVITIES OF DEI CONTRIBUTING TOWARDS THE UN SDGS



CONTRIBUTION OF DEI TO UN SDGS BEFORE COVID -19



CONTRIBUTION OF DEI TO UN SDGS AFTER COVID -19



In Conclusion

Dayalbagh Educational Institute believes in peaceful coexistence, with an aim of common good on this common planet, and in living a life of dignity and higher purpose, social trust and better health, security and well-being.

Thanks